

CERTIFICATE OF LOCATION OF GOVERNMENT CORNER

EAST QUARTER Corner of Section 34, Township 105N, Range 42W

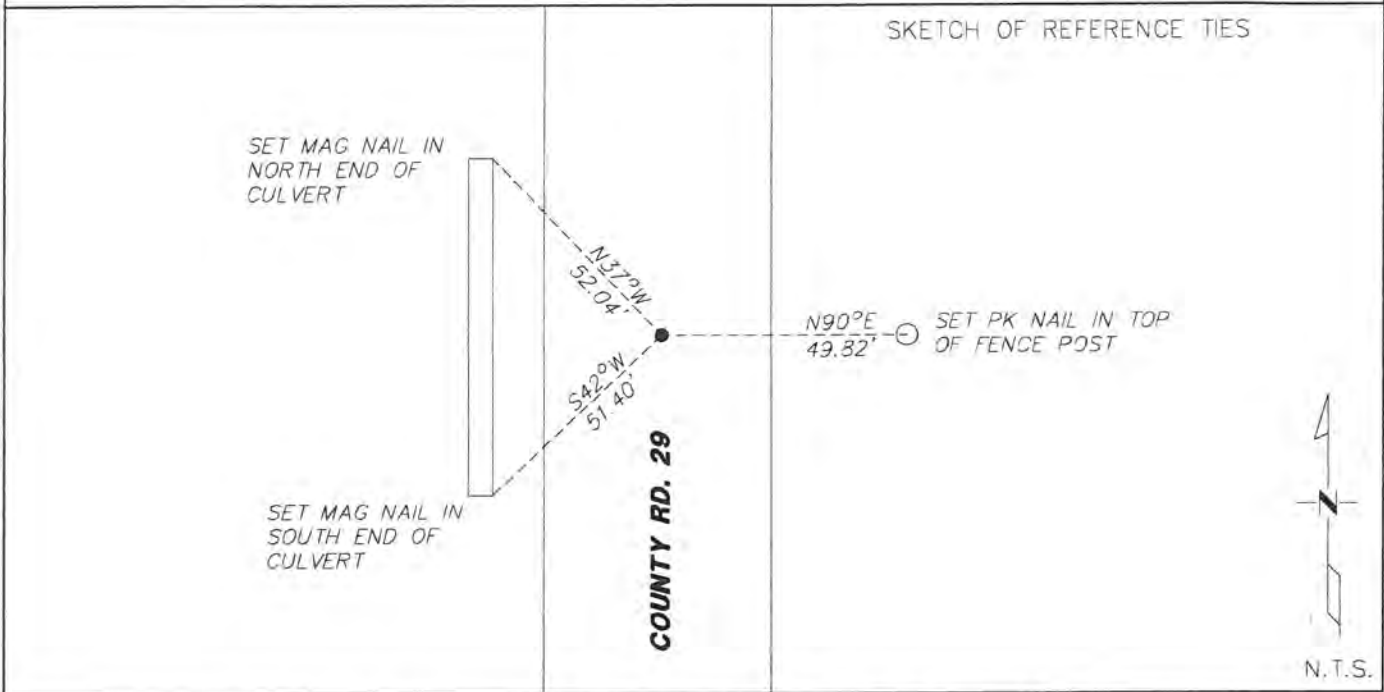
5th Principal Meridian, State of Minnesota, County of Murray.

At the corner location shown on the sketch:

On 05/16/19 found a mag nail on centerline of road.
DATE

left monument as found lowered monument removed monument (explain)

On _____ placed a _____
DATE



Statement of evidence for this corner location is on back of this page.

I hereby certify that this document was researched and prepared by me or under my direct supervision and that I am a licensed Land Surveyor under the laws of the State of Minnesota.

Signature *[Handwritten Signature]*

Date 6/27/19 License No. 49563

Title:

- Land Surveyor Professional Engineer
 County Surveyor County Engineer

OFFICE OF THE COUNTY RECORDER

County of Murray

I hereby certify that this document was filed in the Co.

Recorder's office at 9:00 A.M. on the 8th day of JULY A.D. 2019

County Recorder *[Handwritten Signature]*

by _____, Deputy

DOCUMENT NO. —

Statement of Evidence:

East Quarter corner of Section 34, Township 105 North, Range 42 West, 5th Principal Meridian, Murray County, Minnesota.

- 1970 Murray County section notes show they located a field stone and placed a bridge bolt above stone. Set 3 ties.
Measured 2647' to the SW of Sec. 35.
- Top SFP SE 54.75'
Top SFP NE 60.85'
Top SFP NW 58.20'
- 1997 Murray County, placed a PK nail.
- 2015 Murray County Highway Department, Placed a mag nail after 2015 overlays, 0.5' east of centerline on County Road 29. Coordinates provided.
- 2019 Westwood Professional Services searched area and found a mag nail on centerline of a N-S road. Fits occupation to a fence line to the east and a field line to the west. Set 3 ties. Fits within 0.5' to the SW corner of Sec. 35 from 1970 survey. Matches coordinates provided by Murray County Highway Department. Holding position as best available evidence.

Analysis of the recovered data, field evidence and survey measurements, indicates that the monument found is the correct perpetuation of this corner. For additional information concerning this corner please contact Westwood Professional Services.